

IF YOU ARE USING MAGIC SCHOOL ON A COMPUTER NETWORK your photos folder can be placed on a shared network drive and each installed version of the program can read from it.

The majority of school networks are maintained by a school technician or network manager. These instructions are for this person as they need administrative rights on the network.

Overview: Magic School uses a folder of low res. copies of photos of children's faces for use in the program. If a teacher wants to add their own pupils' photos to the package, this folder needs to be in a location with read/write access for the teacher or administrator of the photos and read access for the pupils. In the case of a network installation this should be a shared location e.g. a library drive on the network. This location should be set up before installation of the software and then pointed to during installation. At any time after you can change/correct the pointers on any computer by using the Manage Magic School utility that is also installed.

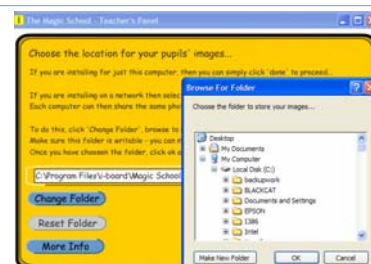
Getting Started:

First create your shared location e.g.

L:\MagicSchoolImages. Take a note of the path. Mapped home drives are not suitable—it needs to be a "Library" type drive—a fixed physical location which all users see with the same drive letter.

Install Magic School on your client and set the folder "pointer":

If Magic School has not previously been installed on the computer. You should be presented, as the final install panel, an opportunity to change the default folder location. Press Change Folder and browse to the shared folder you set up earlier. You can alternatively let the program take its default and use the Manage Magic School utility to change the pointer to the folder afterwards (see below).



Changing the programs folder "pointer" after install:

The Manage Magic School utility in Start/Programs/i-board/ has a change Folder option. This is an essential tool for pointing the program at a new location e.g. if an install on a specific client is using the default location and you wish to point it at a shared location instead. We recommend you check for updated versions of this utility on our website support section.

Relocating images after a photo bank has been built:

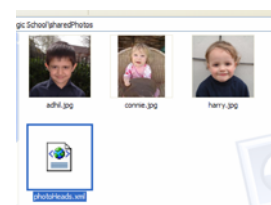
The Magic School photos, along with an xml file are contained within a folder, either in its default location in Program Files\i-board\Magic School\sharedPhotos or in the network folder you created following the procedure above.

This folder can be cut and paste to a new location if you decide that, for example, a photo bank built on a local computer would be more useful in a shared location.

You would then need to point each installation at the new location as described above.

Note: you cannot manually place "unprocessed" photos in this folder - the Manage Magic School utility must be used for this as it generates the xml file and compresses and crops the images.

It is possible to merge images from two folders but in order to do so you would need to amend the xml file to contain both sets of information within its headers. To do so you would need a little xml knowledge. Please contact us for support if necessary.



For technical information

go to www.ideal-resources.com.au or e-mail: support@ideal-resources.com.au